

Program

The new LIMES Graduate School leads students with a B.Sc. degree in any field of Life Sciences through a M.Sc. phase (1.5 years) directly to doctoral studies (3 years; doctoral degree Dr. rer. nat., German equivalent to PhD). „Diplom“ or M.Sc. students are welcome to apply for the doctoral phase of the program. Up to 40 students per year are admitted to the M.Sc./PhD program. The selection is based on academic achievements.

A common scientific aim of the LIMES Research Groups is to integrate aptamer and small molecule high throughput technologies with biological screening in model organisms (*Drosophila*, mouse) to study key regulators involved in metabolic processes and diseases such as diabetes, obesity, lipodystrophies or autoimmunity.

Key Research Areas



- ◆ Chemical Biology and Medicinal Chemistry
- ◆ Development, Genetics & Molecular Physiology
- ◆ Molecular Immune & Cell Biology
- ◆ Membrane Biology & Lipid Biochemistry

Advantages

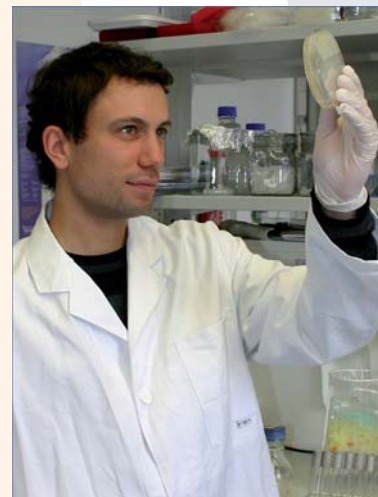


- ◆ The Graduate School provides training for students in scientific areas which are highly interdisciplinary and interfacial by covering biology, chemistry and biomedicine.
- ◆ A wide range of scientific topics are offered by the researchers of the Graduate School and their interacting local and international partners.
- ◆ Students are integrated at an early stage into research groups.
- ◆ A mentoring system helps the students to study efficiently, to plan their career in a more focused manner, and to become independent.

- ◆ The courses and lectures of the program will take place mostly in one central building, the new LIMES bio-center.

- ◆ The Graduate School offers for selected students a highly attractive collaboration and exchange program with our partner Universities thereby allowing students to benefit from the school's international research connections.

- ◆ The Graduate School builds up on and extends the undergraduate program Molecular Biomedicine (<http://www.molbiomed.uni-bonn.de>). It provides the highly selected 30 students of Molecular Biomedicine with an attractive opportunity to stay on in Bonn for their graduate studies.



Participating Institutes

- ◆ Life & Medical Sciences (LIMES) Institute
- ◆ Institute of Genetics
- ◆ Institute of Cell Biology
- ◆ Pharmaceutical Institute
- ◆ Institute of Molecular Medicine and Experimental Immunology
- ◆ Institute of Pathology
- ◆ Institute of Biochemistry and Molecular Biology

Partners



This initiative is supported by a large interdisciplinary excellence network of research and education at the University of Bonn, comprising outstanding scientists of both the natural sciences and medicine; it centrally involves key institutions in chemistry, biology, and medicine. The internationally oriented program is further strengthened by the participation of the Institute of Oriental and Asian Studies Bonn.

Most importantly, the responsible scientists are all members of the existing collaborative research and educational initiatives that constitute the basis for this graduate program (SFB 645, SFB 704, SFB 624, GRK 804, KFO 115).

Depending on the scientific projects and the research groups involved, selected students may have the opportunity for short time exchange with research groups of selected partner universities. These include WASEDA University in Tokyo, the National University of Singapore (NUS), and partner universities in the United States and Australia.

Admission

The principal admission requirement for the Master program is the B.Sc. degree (or equivalent) in the biosciences, biomedicine, medicine, chemistry, or related fields. The bachelor thesis must be graded with ECTS grade A (German grade 1,0 - 1,5).

The admission requirement for the PhD program is the Diplom/M.Sc. degree (or equivalent) in the biosciences, biomedicine, medicine, chemistry, or related fields. The Diploma/Master thesis must be graded with ECTS grade A (German grade 1,0 - 1,5).

The Graduate School admits about 40 students per year. Admission to the graduate school involves a selection procedure. Applications (online) are welcome until July 15 under

<http://www.limes-studies.uni-bonn.de>

Life & Medical Sciences Institute



The Life & Medical Sciences (LIMES) Institute is a center of excellence for both basic research and higher education in life sciences and biomedicine at the University of Bonn. It provides a framework for cutting-edge multidisciplinary research and offers young scientists early independence and responsibility.

The novel LIMES building is situated in the center of the city of Bonn (Carl-Troll-Straße), where a new University campus will be built in the next decade. It will provide space for labs and offices (about 9.600 sqm) and will contain central facilities and a common infrastructure for research and teaching of the LIMES groups.

University of Bonn

Boasting almost 200 years of tradition, about 28,000 students and an outstanding reputation both at home and abroad, Bonn is without question one of Germany's leading universities. Our University is situated in a wonderful city where people are able to live that little bit better...



Bonn is a research university that operates on an international level, but in doing so we continually maintain our long standing traditions. We cooperate with a number of different universities and research establishments across the globe and have developed unique teaching and research methods that have received worldwide recognition and acclaim.

Contact

LIMES studies
Life and Medical Sciences Bonn

University of Bonn
Coordination Office *LIMES studies*
AVZ 1, Endenicher Allee 11-13
53115 Bonn, Germany

phone: +49-(0)2 28 / 73 - 64 61
fax: +49-(0)2 28 / 73 - 63 85
studies@limes-bonn.de
<http://www.limes-studies.uni-bonn.de>

© LIMES central office
info@limes-bonn.de
phone: +49-(0)2 28 / 73 - 65 87

V 11/08 3000 R

LIMES
Graduate School



M.Sc./PhD
Life & Medical Sciences

universität**bonn**